

WHO WE ARE

At **iTSikhwal Pvt Ltd**, founded by Tarun Sikhwal, we turn imagination into immersive reality.

We specialize in building next-generation AR, VR, AI, and metaverse experiences that redefine how people learn, design, create, and interact in the digital world.

From transforming interior design with **DesignXR**, to enabling AI-powered workflows with **iVA Mate**, we craft products that feel futuristic yet effortless.

Our focus is innovation, precision, and real-world impact.

CONTACT US

iTSikhwal Pvt Ltd

Pune, Maharashtra, India

Phone: +91 7709846067

Email: itsikhwal@gmail.com

Web: <https://itsikhwal.netlify.app/>



The Next Era of Digital Experiences

The logo for iTS, featuring a stylized lowercase 'i' with a blue circular icon containing a white gear-like pattern, followed by the letters 'TS' in a large, blue, serif font.

iTSikhwal Pvt Ltd.

The better information
about the Virtual World

TECH STACK

At **iTSikhwai Pvt Ltd**, we build high-performance immersive and AI-driven products using a modern, scalable, and production-ready technology ecosystem. Our stack is designed for real-time 3D, XR, AI, multiplayer networking, and cloud automation.

XR, 3D & Game Development

- **Unity 3D** (primary engine for AR, VR, MR and simulations)
- **OpenXR, XR Interaction Toolkit, Meta XR SDK**
- **WebXR** for browser-based immersive experiences
- **Ready Player Me, Mixamo, Blender** for 3D assets and avatars

AI & Machine Learning

- **Google Gemini APIs** (AI reasoning, generation, multimodal understanding)
- **OpenAI APIs & Azure OpenAI**
- **Computer Vision:** MediaPipe, OpenCV, custom pose/face models
- **NLP & Voice:** Speech-to-text, text-to-speech
- **Real-time face tracking & expression mapping**

Multiplayer & Networking

- **Photon Fusion, Photon PUN, Mirror Networking**
- **Unity Netcode** (iVA Mate)

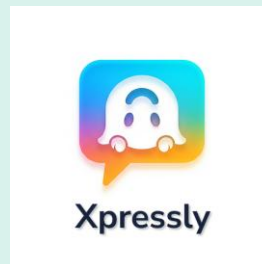
Backend & Cloud Infrastructure

- **Firebase** (Auth, Realtime DB, Firestore, Cloud Storage)
- **Supabase, PostgreSQL, MongoDB**
- **AWS S3, CloudFront, Lambda Docker, CI/CD Pipelines**

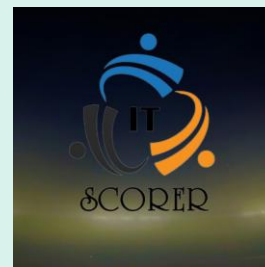
OUR PRODUCTS & SERVICES



DesignXR is the ultimate platform for interior design professionals who demand precision, realism, and elegance. Built for Meta Quest and cross-platform, DesignXR lets you visualize, validate, and present your most ambitious ideas in immersive XR—including Virtual Reality (VR) and Mixed Reality (MR).



Xpressly is a next-gen social chatting app that makes conversations fun, immersive, and truly personal. Whether you're sharing a quick message or hanging out in Avatar Mode, Xpressly makes every interaction more human, more fun, and more expressive.



Utilizing cutting-edge technology, I meticulously crafted the Cricket Scoreboard Management System with Online Video Streaming. Leveraging VB.NET programming for the backend and a sleek user interface design, I ensured seamless integration of real-time scoring updates with live video feeds. Employing OBS for live streaming and YouTube integration, the system offers unparalleled accessibility. Incorporating features like live audio commentary and predictive analytics.

MAKE IT YOUR OWN

At **ITSikhwai Pvt Ltd**, we believe powerful innovation should also be simple to present.

This brochure uses clean formatting and structured styles—easy to update, adapt, and redesign to match your brand identity. Whether you use your own color palette or custom typography, your message will look polished in seconds.

TECHNOLOGY BECOMES MAGICAL WHEN IT FEELS NATURAL. THAT'S THE FUTURE WE BUILD."

— THE ITSIKHWAL TEAM

Try Our Products :

Meta Quest Store :

<https://www.meta.com/experiences/designxr/9863105597126688/>

Google Play Store :

<https://play.google.com/store/apps/dev?id=5120486680739697253>

LET'S CONNECT

Website : <https://itsikhwai.netlify.app/>

SOCIAL MEDIA

LinkedIn: <https://www.linkedin.com/company/itsikhwai>

Instagram: <https://www.instagram.com/itsikhwai>

YouTube: <https://www.youtube.com/@itsikhwai>

OVERVIEW OF PRODUCTS

DesignXR

A next-gen immersive interior design platform that lets users create, customize, and visualize spaces inside AR, VR, and 3D.

Perfect for architects, studios, designers, and real-estate innovators.

iVA Mate

An AI-powered metaverse assistant that guides users through tasks, manages virtual assets, and enables real-time voice, gesture, and spatial interactions.

FaceChat

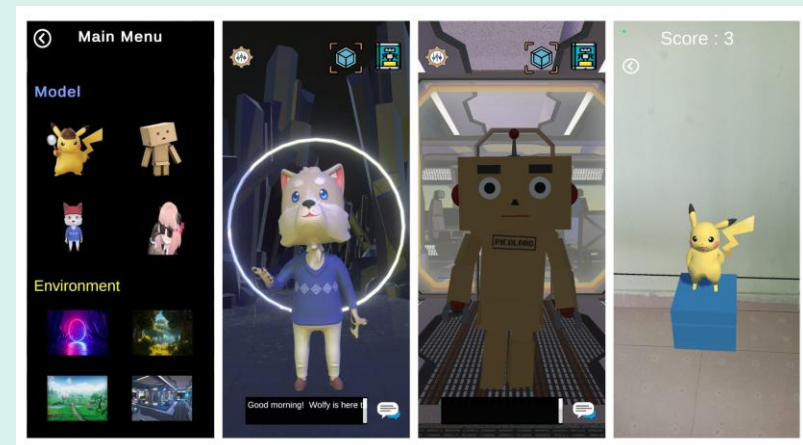
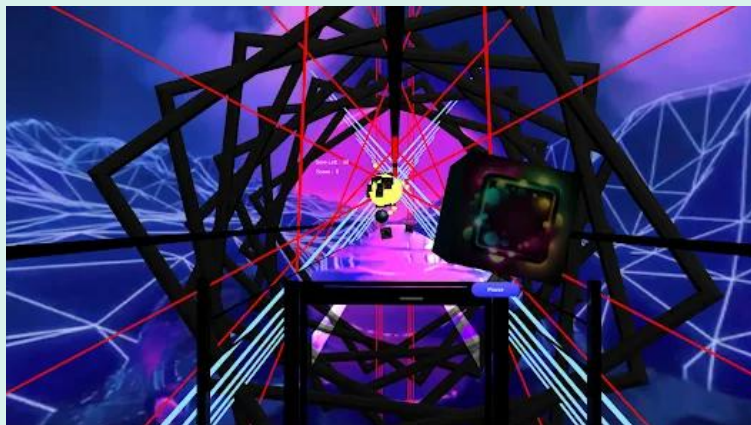
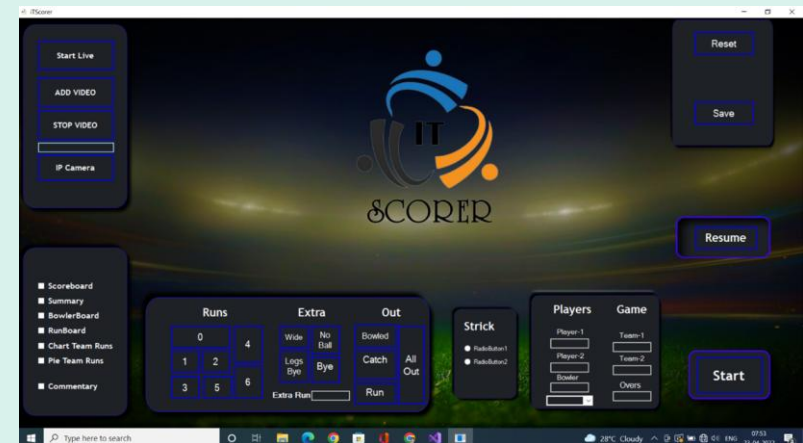
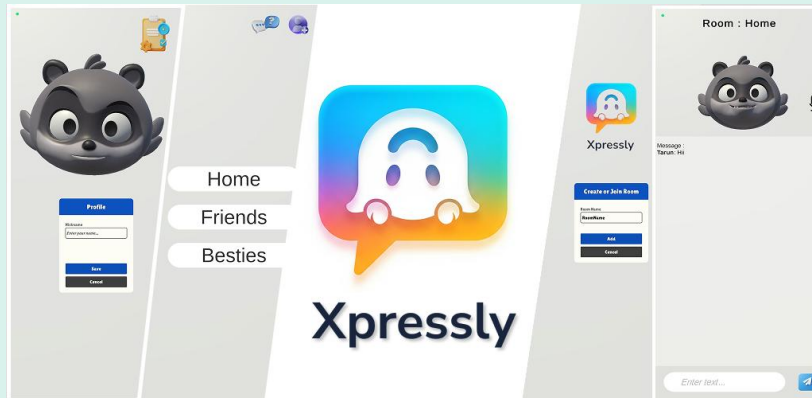
A face-tracking avatar communication app that brings expression, motion, and emotion-based video calling into the digital world.

MISSION

To redefine the future of human–digital interaction through immersive technologies that inspire, educate, and empower.

We create solutions that blend artificial intelligence, spatial computing, and design innovation into meaningful real-world impact. Every product we build reflects our belief:

technology should feel intuitive, immersive, and truly human.



Let's Build something amazing together